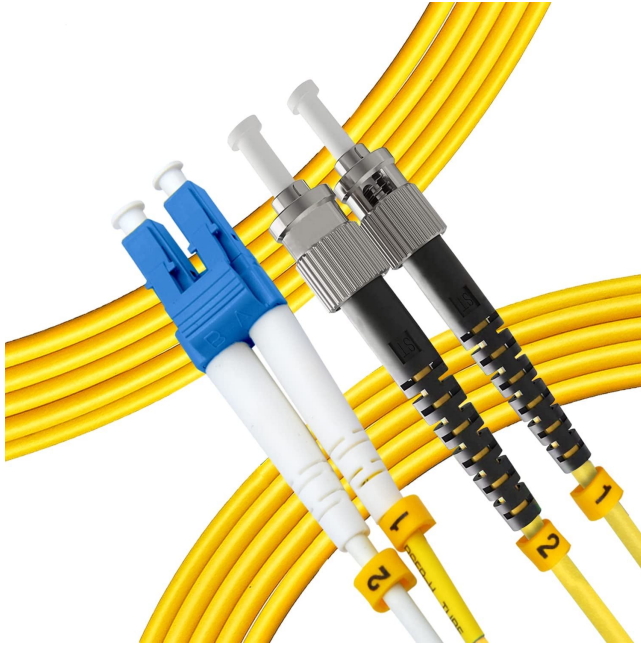


OS2 - Simplex/Duplex Patch Cord Singlemode



Product overview

The single-mode patch cords are manufactured using LSZH cables, conforming to IEC, EIA/TIA, or Telcordia standards.

These OS2 patch cords are terminated with standard connectors, ensuring superior optical performance and minimal signal loss over long distances.

Features:

- Simplex and Duplex Configuration
- High Precision Ceramic Ferrule with Excellent Concentricity
- Low Smoke Zero Halogen (LSZH) Cable Available in Yellow
- OS2 Fiber Conforms to ITU-T G.652.D, TIA/EIA 492CAAB, IEC 60793-2-50 B1.3
- Fiber Grade: G652D/G657A1/G657A2/G657B3

Specification:

Cable

CHARACTERISTICS	
Cable Material	LSZH
Strength Member	Aramid
Jacket Color	Yellow
Jacket Thickness (mm)	0.45 +/- 0.05
Operating Temperature (°C)	-40 to 80
Cable Diameter (mm)	2.0 mm

Fiber

CHARACTERISTICS	
Fiber Grade	SM 9/125 G652D or G657A or G657B
Core Diameter	9 microns
Cladding Diameter	125 microns
Fiber Cable Compliance	According to IEC 60793-2, ROHS Compliant
Wavelengths	1310/1550nm
Maximum Distance	10 km at 1310 nm (10 Gb/s) 40 km at 1550 nm (10 Gb/s)
End surface test is according to	WI-QJ-021
Repeatability	<0.2dB 1,000 times mating cycles
Jacket Thickness (mm)	0.45 +/- 0.05
Operating Temperature (°C)	-20 to 60

Connector

CHARACTERISTICS	
Insertion Loss	Typical: <0.2dB, Max. 0.3dB
Return Loss	>=30dB
Connector Ferrule	Ceramic

Ordering Information:

Connector A		Connector B		MODE		Cable Configuration		Cable Colour		Cable Length	
SC	SC	SC	SC	OS2	OS2	S	Simplex	YE	Yellow	1	1 meter
LC	LC	LC	LC			D	Duplex			2	2 meter
ST	ST	ST	ST							3	3 meter
MTRJ	MTRJ	MTRJ	MTRJ							5	5 meter
FC	FC	FC	FC							10	10 meter
MU	MU	MU	MU							xx	xx meter

Example Part Number

LC	SC	OS2	D	YE	2
----	----	-----	---	----	---

LCSCOS2DYE2 → LC to SC OS2 LSZH patch cord color yellow, 2 meter